



Orb, 2010, eggshell, wire, paper

### Wolstenholme Creative Space

11 Wolstenholme Square, L1 4JF  
Tel: 0151 324 1493

#### Album

18 September–17 October

*This place has touched me, this memory will record me, you will shape me.*

Album is an exhibition comprised of new and existing works by 17 artists currently on the Royal College of Art's Photography MA. Working across the disciplines of photography, film and video, new site-specific works, which seek to respond to the particularities of the surrounding area and Wolstenholme Creative Space (WCS), will also be produced.

Intrigued by the prospect of exhibiting in an unconventional gallery space, the decision to show at WCS was made by the group in order to allow reciprocity of influence to take place between the institution and the artist-led not-for-profit space.

Similarly, the site itself will, in hosting the collection, be subject to a process of transformation and re-reading.

#### With These Walls We Are Shaped

28 October–28 November

The gallery's second contribution to the Biennial invites 12 artists selected by open submission – Michael Coombe (UK), Henrietta Simson (UK), David Eveleigh and Melissa Evans (UK), Su-Chen Hung (USA), Andrew Brookfield (UK), Junichiro Inase (Canada), Ulrike Oeter (Germany), Cait Walker and Robin Heap (UK), Carol Ramsay (UK) and Hannah Wiles (UK) to create site-specific work within the gallery's crumbling walls. The building, now inhabited by WCS has been around since the 1700s, when it was home to Liverpool's first mayor, and has been an artistic space since the 1990s. Nestled between two nightclubs, the once grand building's dark structures rub shoulders with the Square's garish neon posters. The juxtaposition of grandeur and throwaway enables a space in which DIY culture and artistic practice can flourish.

This exhibition, curated by Priya Sharma and Caroline Smith, will showcase the artists' varying concepts and reactions to such a unique environment. They explore being touched by both the walls of the places and environments we inhabit, as well as the walls and structures we create within our awareness in relation to others' feelings and communication.

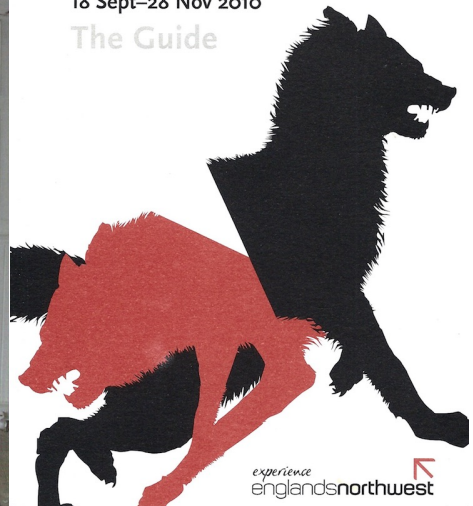


## liverpool biennial

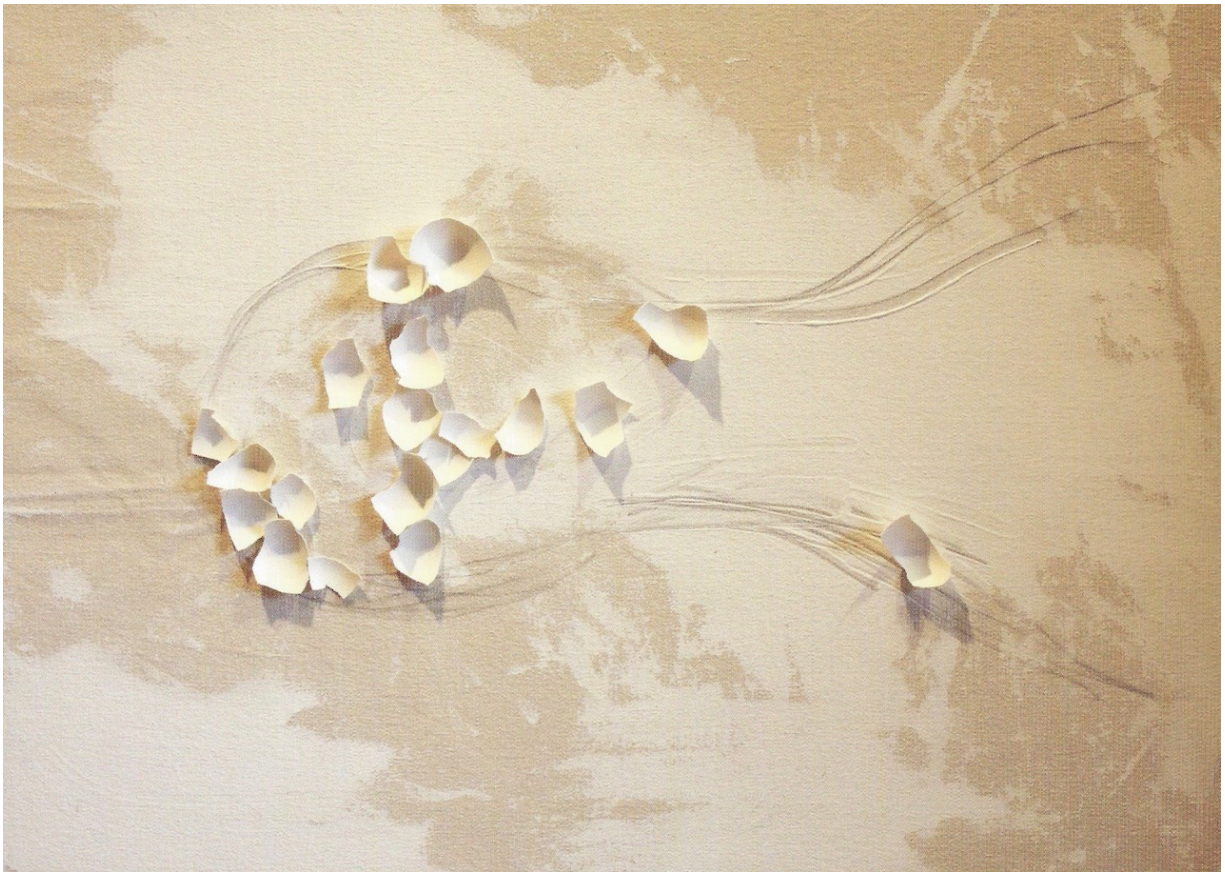
*International Festival of Contemporary Art*

18 Sept–28 Nov 2010

The Guide



experience  
englandsnorthwest



Front: Junichiro Iwase, "Head in the Clouds", 2009, 18"x24" Back: Katie Cheung, "Sunflower", 1997, 15"x9"



## drawntogether

JULY 3 - AUGUST 14, 2009

**taiga chiba • katie cheung**  
**tomoyo ihaya • junichiro iwase**  
**shyh-charng lo**

**artist panel discussion:**  
 july 30, 2009, 3pm

**official reception:**  
 july 30, 2009, 4pm - 6pm

in participation with



**Art Beatus (Vancouver) Ltd.**

108 - 808 Nelson St, Vancouver, BC Canada V6Z2H2 (t) 604.688.2633 (f) 604.688.2685 精  
 (e) info@artbeatus.com [www.artbeatus.com](http://www.artbeatus.com) Hours: Monday - Friday, 10am to 6pm 藝  
 Calling to arrange an appointment is recommended. Street/Underground Parking Available. 軒



# ART BEATUS

art beatus (vancouver) consultancy ltd.

**For Immediate Release**

## **Cracked Up!**

***Eggs-traordinary Works By Junichiro Iwase***

February 2, 2007 - April 27, 2007

Opening Reception: Feb 2, 2007, 3-6pm, Artist in Attendance



Art Beatus (Vancouver) Consultancy Ltd. is pleased to present new works by local artist, Junichiro Iwase in the featured exhibition, “***Cracked Up!***”. Junichiro brings two series of giggle-inducing work to this exhibition; his dark yet humorous ‘Egg’ series from recent past and a delightfully fun new series of work that incorporates eggshells as texture for his paintings. “***Cracked Up!***” begins Friday, February 2, 2007 with an opening reception starting at 3pm and ending at 6pm; the artist will be in attendance and the public are warmly invited and encouraged to attend.

Junichiro’s ‘Egg’ paintings were inspired by his ‘Sick in Japan’ series which was developed while Iwase was living in Tokyo; the works featured a character named St (pronounced S.T.) who claimed 'Japan was sick'. A satirical look at modern-day Japan, no one really knew if the character’s point of view was based in a social, economic or political way but the works did receive some criticism; viewers questioned whether the opinion of the character reflected the view of the artist; some even suggested Iwase was anti-Japanese. While continuing with the same subject matter, the artist softened the appearance of his paintings by changing the colours and materials used for the work; the reverse occurred in which viewers thought the paintings to be cute. Iwase thought the effect to be humorous and began striving for middle ground. “One day, St’s eyes fell out and became an egg....”. The character, St died and eggs, one, two, three, began to appear on the canvas.

A solitary egg painted on each canvas presents viewers with an ever-recognizable constant, yet there are also noticeable differences in the slight shape or presence of each egg and the more obvious variations in colour. “*There is something magical about creating the same thing over and over again. It is like looking at the moon. Sometimes I think I see the same moon every night but each time I do, it is different. The subtle change in the moon’s nightly appearance always inspires me to create something new from the same thing*”.



From the dark and comical egg paintings grew a more lighthearted, playful series of work. Portraits created with eggshells as a base for texture, feature friends and family of the artist, some recognizable Vancouver locals, nature, and animals. Both series seem to inspire giddiness - it’s hard to prevent a chuckle, if not a laugh when viewing the works. While the ‘Egg’ series may have projected an element of something heavier in past, the progression towards a brighter, cheerier series of work may suggest an optimistic and hopeful future.



# CRACKED UP!

featuring eggs-traordinary works by

精  
藝  
軒

**junichiro  
iwase**

**February 2 - April 27, 2007**

**Opening Reception: February 2, 2007 from 3-6pm**

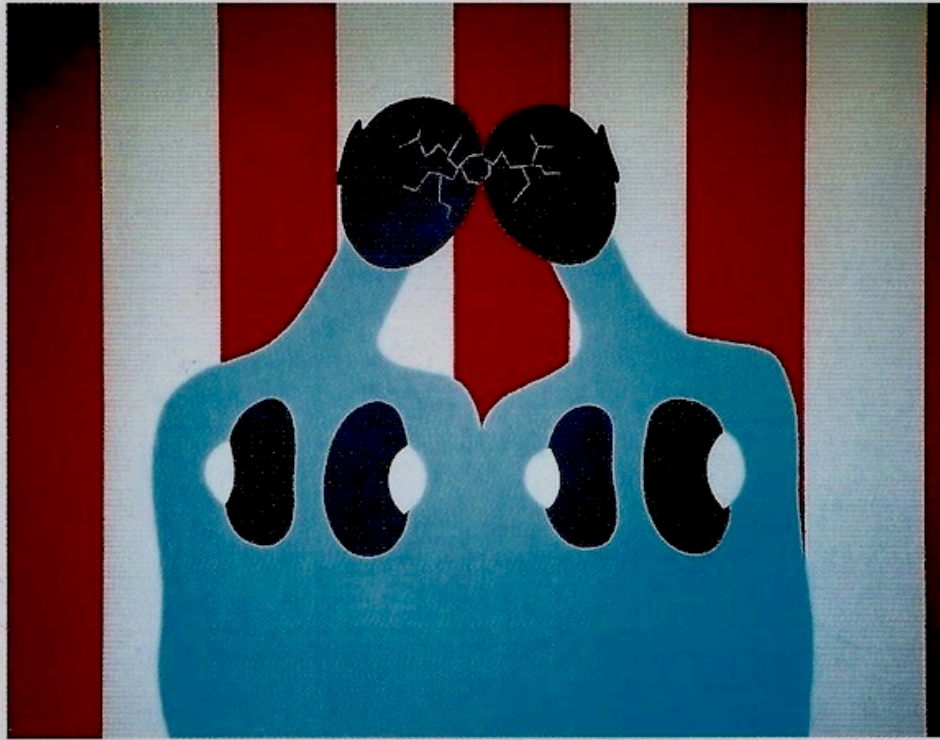
Art Beatus (Vancouver) Consultancy Ltd, 108 - 808 Nelson St, Vancouver, BC V6Z2H2 Canada t: 604.688.2633 f: 604.688.2685  
Open Mon - Fri, 10am to 6pm e: info@artbeatus.com Calling for appointment is recommended [www.artbeatus.com](http://www.artbeatus.com)

## cracked up!

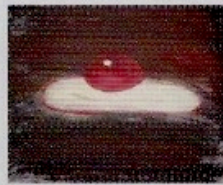


**junichiro  
iwase**





# Happy New Eggs



**IWASE Junichiro**

2.18(sat) ~ 2.28(tue)



《St with Head》 スクリーンプリント  
52×78cm(シート) 2005年 ed.30 版元:ギャラリー-21+葉



《egg eye a (red)》 キャンバスにアクリル  
61×50cm 2005年

# 岩瀬殉一郎

I w a s e J u n i c h i r o

HANGA  
2006  
版画芸術 131  
HANGA  
GEIJUTSU

巻頭特集  
コレクターが気になる  
版画のめばえ  
日本の新しいエディション

山口 龍 / 杉戸 洋 / 池内晶子 / 川島秀明 / 筒川知美  
横爪 彰 / 山本良基 / 岩瀬殉一郎 / 岡田沙  
ミヤケマイ / 木原千春 / 宮崎勇次郎 / 藤田教夫

田中敦子の  
(12 beans) から  
1点印刷

李禹煥 新作リトグラフ  
舟越桂 新作銅版画 追悼 田中敦子

4/50





\*egg eyes\*

From Canada to Shanghai and Seoul

## Junichiro Iwase

Junichiro Iwase, born in Tokyo Japan, was raised in Vancouver, Canada. He studied sculpture at the Johnson Atelier in the United States and has since held exhibitions in New York and Tokyo. Since last year, he has participated at art fairs in Seoul and Shanghai in connection with a Japanese Gallery. At these art fairs he exhibited a series of animated characters with the titled "Sick in Japan". These paintings are expressed with simple lines and colors and satirize contemporary life in Japan, his birthplace. As a Japanese-Canadian, he sees Japan through a different perspective than a Japanese person; this is evident in his animated characters; as if imitating Japanese manga he has given them his own unique twist. The opportunity to participate in the art fairs have given him a chance to make silk-screen prints of his "Sick in Japan" series which will be exhibited in Korea at SIPA 2005.

In the last two years, he has participated in Asian art fairs four times, including this fall. He is currently producing a new series of work with the theme on "egg" which he hopes to develop when returning home to Canada.



egg series

**AAC CITY**  
ASIAN ART CITY  
quarterly  
2005  
autumn issue  
Vol. 1  
Free Magazine

TOKYO SEUL BEIJING SHANGHAI TAIPEI HONG KONG

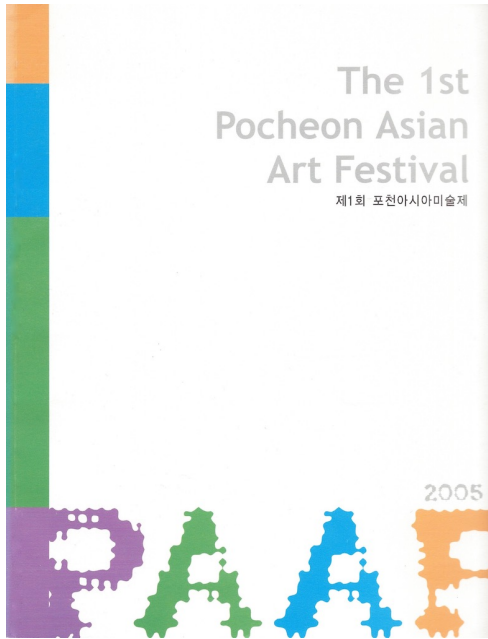
Special Topics:  
**Yayoi Kusama**

Features. 1  
**Dynamic EAST-ASIAN  
International Art Fair**  
Beijing, Shanghai, Seoul, Tokyo 2005

Features. 2  
**YOKOHAMA  
Triennale 2005**  
Interview with  
general Artistic Director  
**Tadashi Kawamata**

Asian Artists Crossing Borders  
**Sung Rhee**  
**Junichiro Iwase**

asianartcity.com



St with head, Acrylic on cotton, 65x53cm, 2005

### Iwase, Junichiro | Japan

Some people seem to have a negative impression of my 'Sick in Japan' works. However, I only see these works as being nothing but positive. For instance, when someone you know is sick, you naturally want them to become better. These paintings if anything, try to stimulate compassion amongst the viewer. I am not implying Japan is sick by any means, I am using Japan in reference to people. The main objective in these works is trying to reveal what is hidden under the surface, in other words, to see something other than what is shown. In previous paintings, I used three hues: red, white and black; these were very graphic in appearance, and the use of these solid colors put a lot of attention on the words 'Sick in Japan'. As a result, some people came to question the meaning behind the words. Some people even thought I was being anti-Japanese. I began to make a new series with pink as base color and substituted cotton for canvas to soften the general image of the words. The reverse happened and some people thought the works were cute. I thought this was humorous. I am now striving for middle ground.

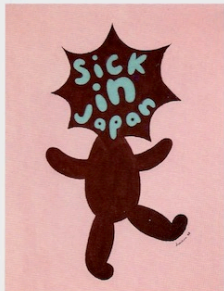
Iwase Junichiro



Sick Umbrella Man, Acrylic on cotton, 73x81cm, 2005



St with Strawberry, Acrylic on cotton, 70x81cm, 2005



Untitled, Acrylic on cotton, 61x80cm, 2005



St on Skateboard, Acrylic on cotton, 61x80cm, 2005

The 1st Pocheon Asian Art Festival 2005 196

197 The 1st Pocheon Asian Art Festival 2005



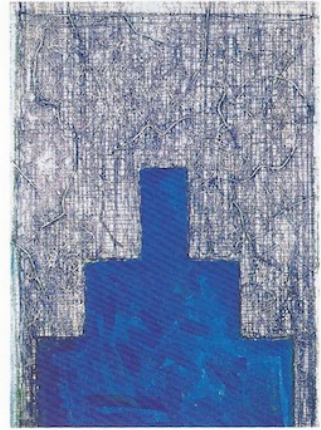
**KOREA INTERNATIONAL  
ART FAIR** MAY 24 - 29, 2005



Orimoto Tatsumi  
In the Big Box 60x70cm Color photography 1997



Iwase Junichiro  
Sick Umbrella Man 20.8x25.5cm Acrylic on canvas 2004



Imano Ohsuke  
Untitled 72.7x53cm Mixed media on canvas 2005

Booth No. B8

## Gallery 21+Yo

Add: Saisei Bldg 2F, 1-5-2 Ginza, Chuo-ku, Tokyo, Japan 104-0061

Tel: 81-3-3567-2816

Fax: 81-3-3567-2816

Homepage: [www.gallery21yo.com](http://www.gallery21yo.com)

E-mail: [kuroda21@d4.dion.ne.jp](mailto:kuroda21@d4.dion.ne.jp)

Director: Kuroda Yuko

Staffs: Kuroda Megumi, Ohsawa Yayoi

Exhibiting Artists: Iwase Junichiro, Orimoto Tatsumi, Ikeuchi Akiko

### TATSUMI ORIMOTO



PERFORMANCE  
**BREAD-MAN SON + ALZHEIMER MAMA**  
21 SEPTEMBER - 21 OKTOBER, 1996

Orimoto Tatsumi  
Bread Man Son + Alzheimer Mama, from Art Mama Series  
Poster, Offset, 103 x 72.8cm, 1996



Iwase Junichiro

St attacks DOB Silk Screen 40.5 X 40.5cm 2005



[日本] 21+Yo 画廊

展位号: 一馆/B27  
地址: 日本东京都中央区银座 1-5-2 西势 BD 2F  
联系电话: 0081-3-3567-2816  
传真: 0081-3-3567-2816  
电子邮件: kuroda21@d4.dion.ne.jp  
网址: www.gallery21yo.com  
邮编: 104-0061  
负责人: 黑田悠子

**[Japan] Gallery 21+Yo**

Hall/Booth | 1.0/B27  
Address | Saisei Bldg.2F, 1-5-2 Ginza Chuo-Ku, Tokyo, Japan  
Phone | 0081-3-3567-2816  
Fax | 0081-3-3567-2816  
Email | kuroda21@d4.dion.ne.jp  
Website | www.gallery21yo.com  
Postcode | 104-0061  
Director | Kuroda Yuko



Japanese galleries have come to Shanghai Art Fair!

# Gallery 21 + Yo

The gallery features artists placing the theme on humans, and abstract works using colors in nature.

Saisei Bldg 2F, 1-5-2 Ginza Chuo-ku Tokyo, Japan  
tel 81-3-3567-2816 fax 81-3-3567-2816  
e-mail kuroda21@d4.dion.ne.jp



YUKO KURODA



TATSUMI ORIMOTO

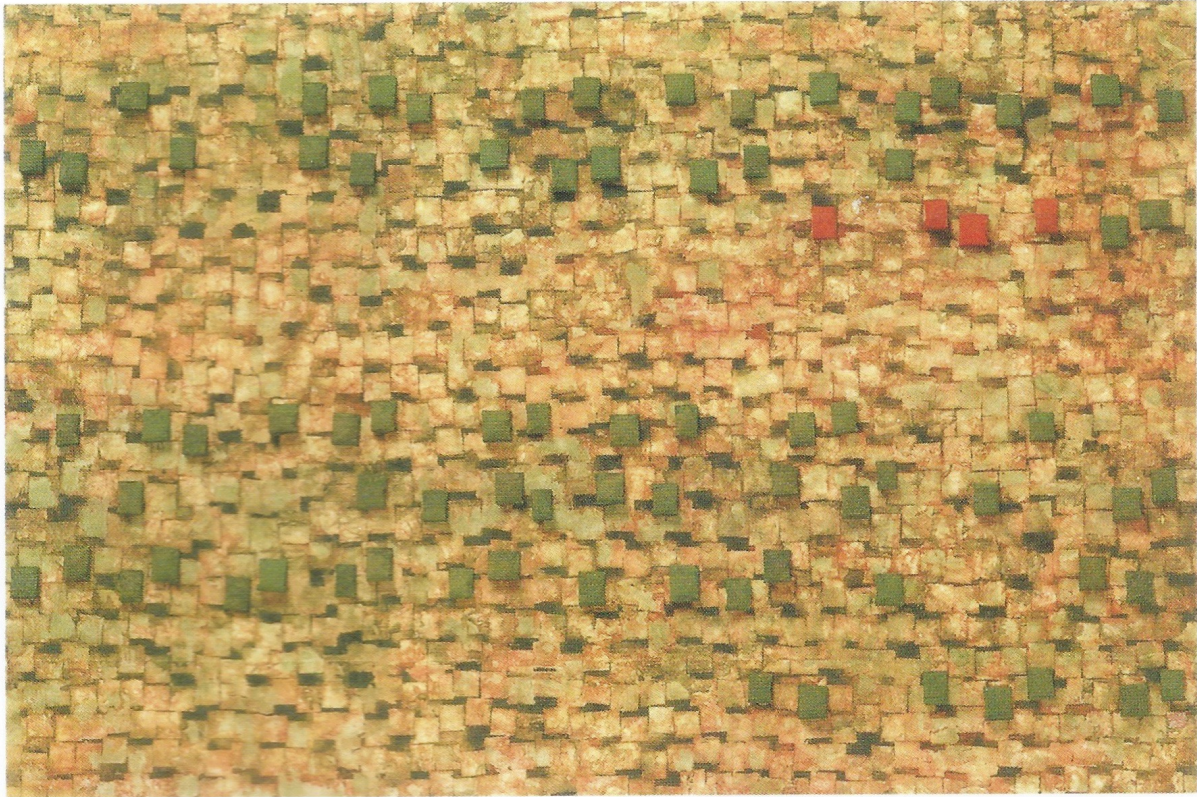
Gallery 21 + Yo, located in a gallery area of Ginza, Tokyo, will present artworks by 4 artists for Shanghai Art Fair of this time: 3 Japanese artists placing their theme on humans, and 1 Korean artist who makes abstract, semi-three-dimensional works.

Let us see each artist: performance artist Tatsumi Orimoto (b. 1946), whose artistic talent is evaluated overseas, higher than domestic, will show 3 photographic pieces from his "Art Mama" series depicting Orimoto's mother contracting Alzheimer's disease; Younger artist Jun'ichiro Iwase (b. 1971) was born as a son of Japanese parents, and currently lives in Canada. He draws paintings with the use of red, white, and black acrylic only. They feature clear colors and lines. For Shanghai Art Fair, Iwase will show 8 series works depicting umbrella; Yuko Kuroda, painter and the owner of the gallery, will exhibit 3 acrylic paintings, placing the theme on "face." ; and Korean artist Park Sun Hee is a highly motivated artist, though his theme not being placed on humans. We hear that the gallery agreed to his participation in the Art Fair, recognizing his strong wish to present his work there. His carrier started from two-dimensional works, and recently



JUNICHIRO IWASE





PARK SUN-HEE

moved to such works as having three-dimensionality. The Korean artist wraps natural materials like turmeric and red ochre with a Korean paper in tea bag-like shape, moistens it to generate refreshing colors, and attach them to canvas. As a result, a kind of abstract is created there. Park Sun Hee is an artist, w-ho produces paintings using colors of natural materials, not usual oil paintings. For Shanghai Art Fair, he will exhibit 4 or 5 works of that kind.

Twenty-two years have passed since Gallery 21 + Yo opened in 1982 with insufficient funds. We hear that the

gallery became to be able to develop its original activities from around the time of the 10th anniversary.

"Since around the time of the 15th anniversary, we have become able to continue to hold friendship-exchanging exhibitions with Korean or German galleries. As we cannot often plan exhibitions overseas, in these years we participate in art fairs where various overseas galleries gather together. Domestically, it is quite difficult that artists generally can receive proper recognition unless they show an ideological or conceptual principle, but overseas, as artists are obscure abroad, they can have their

work frankly appreciated by visitors, which I think will encourage the artists. So, we participate in the Art Fare in China for the first time, hoping that a lot of people will see exhibits of our artists in the enlivened environment of art fair," says the gallery owner Yuko Kuroda about ambitions for participation of this time. Gallery 21 + Yo is coming to start its new activities in China.



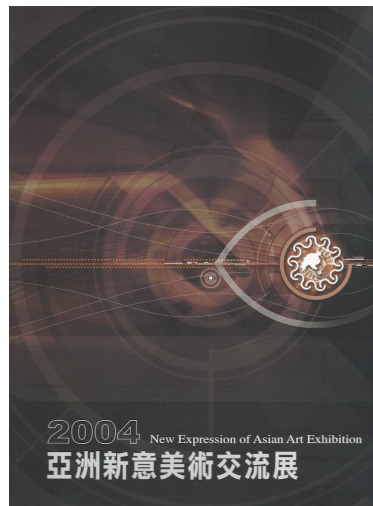
YUKO KURODA





扁桃腺樹 · Tonsil Tree / 壓克力 · acrylic on canvas / 107 × 76cm

New Expression of Asian Art Exhibition 2004



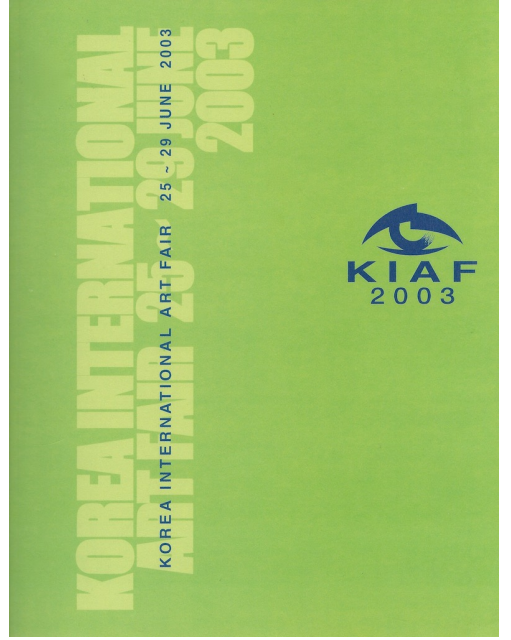
New Expression of Asian Art Exhibition, Taiwan 2004



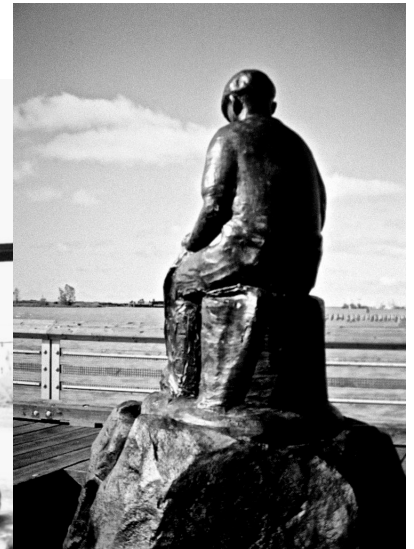
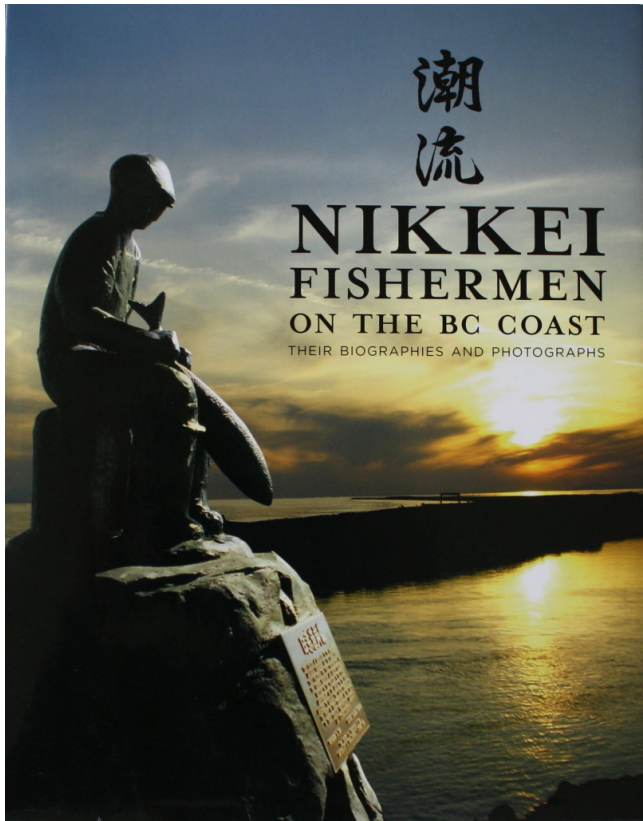
Aoki Noe / Mayall  
Pencil Drawing 78x56cm 2002



Iwase Junichiro / Sick Bather (Sick in Japan 2002)  
Acrylic on Paper 50x26cm 2002







Returns home to complete commission of 'Wind' (Nikkei Fishermen's Memorial)  
for the Nikkei Fishermen's Committee in 2002, Life Size Bronze, Steveston Waterfront, Richmond, B.C.

Returns to Japan 2003, begins to exhibit at Art Fairs in Asia

 <p><b>noriko ambe</b> Gallery Matsuda</p>	 <p><b>mariko sugano</b> Gallery Kobayashi</p>	 <p><b>issei kurihara</b> Gallery Ik</p>
 <p><b>masanori murao</b> Gallery O</p>	<p><b>THE TEN ELEMENTS</b> Focusing on a new generation in Tokyo 2003 artist support program 2003</p>	 <p><b>jun honma</b> Gallery dan</p>
 <p><b>kentaro tomoeda</b> Nishi Gallery</p>	<p>画廊からの発言—主催・東京現代美術画廊会議 新世代への視点 2003年 7月28日(月) —8月9日(土) 午前11時30分-午後7時 最終日午後5時まで 日曜・日外無</p>	 <p><b>akiko tsuda</b> Gallery Yamaguchi</p>
 <p><b>junichiro iwase</b> Gallery 21+V0</p>	 <p><b>naoko kameyama</b> Al Gallery</p>	 <p><b>aya kawaguchi</b> Galerie Tokyo Humante</p>



photo: Shigeo Anzai

## ギャラリー21+葉 岩瀬殉一郎 *Junichiro Iwase*

「皮をはいですべてを露出せよ」

私にとって、絵画のプロセスは極度に個人的で内密なものである。

ときに、自分の作品を見ていると、だれか他人の日記をのぞき見ているかのように感じる。ひょっとすると、こうしたのぞき、あるいはのぞきが見つかってしまうかもしれないということから得られるひそやかな興奮が、私に絵を描き続けさせるのかもしれない。

"Remove the skin to uncover everything"

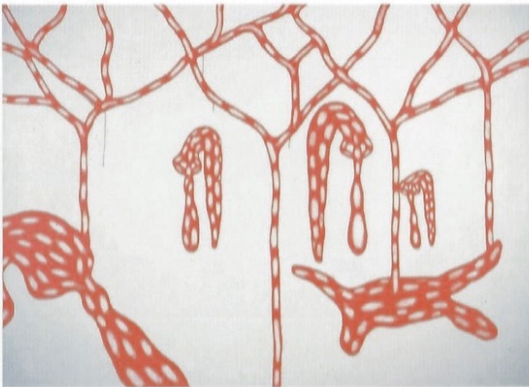
For me, the process of painting is intensely private and secretive.

At times, when I look at my work, I feel as though I am peering into someone else's diary. Perhaps, the quiet thrill I get from this or the possibility of being caught is what drives me to continue.

新世代への視点 '03

岩瀬殉一郎

IWASE Junichiro exhibition



Sick in Japan

2003・7/28月—8/9土

ギャラリー21+葉

岩瀬殉一郎

IWASE Junichiro exhibition

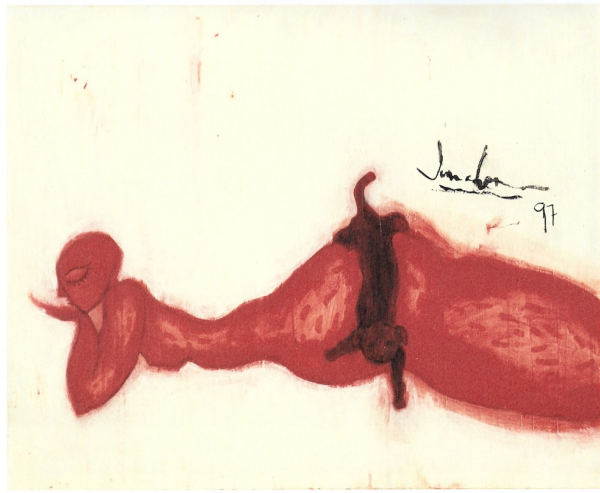


絵画

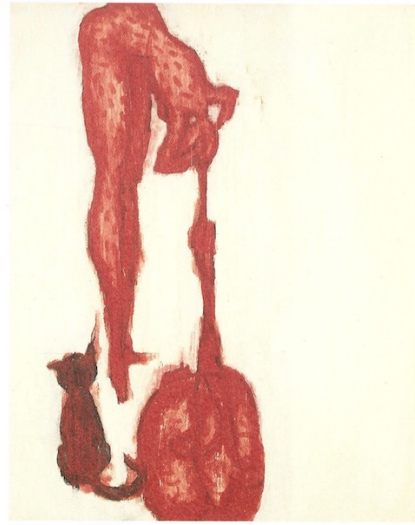
2002・2/25月—3/2土

ギャラリー21+葉

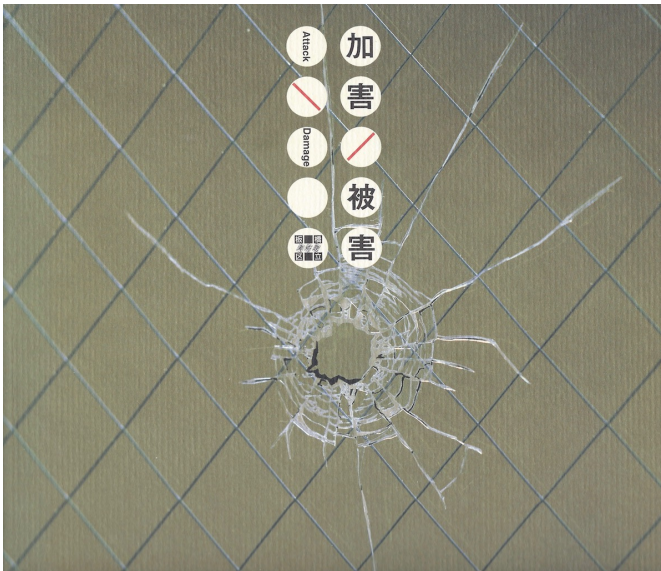




38 | 岩瀬純一郎 [NUDE] 1997  
IWASE, Junichiro Nudo



40 | 岩瀬純一郎 [BATHER] 1997  
IWASE, Junichiro Bather



# GINZA GALLERY NET '98

Hybrid @sia



ギャラリーGAN

Gallery GAN

今井俊満

IMAI

日本人作家  
Japanese Artist



コバヤシ画廊

Kobayashi Gallery

前本彰子

Shoko Maemoto

日本人作家  
Japanese Artist



ギャラリーなつか

Gallery Natsuka

エサシトモコ

Tomoko Esashi

日本人作家  
Japanese Artist



養清堂画廊

Yoseido Gallery

清野泰行

Yasuyuki Kiyono

日本人作家  
Japanese Artist



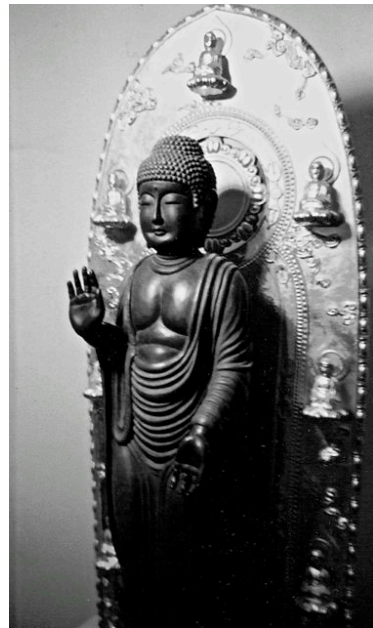
ギャラリー21+葉

Gallery 21+Yo

岩瀬殉一郎

Junichiro Iwase

バンクーバー在住日本人作家  
Japanese Artist Canadian Nationality



Completes modeling and casting of "Kannon" at Johnson Atelier Institute of Sculpture in 1997  
(Installs work at Hosenji Temple, moves to Japan same year and begins exhibiting in Tokyo)

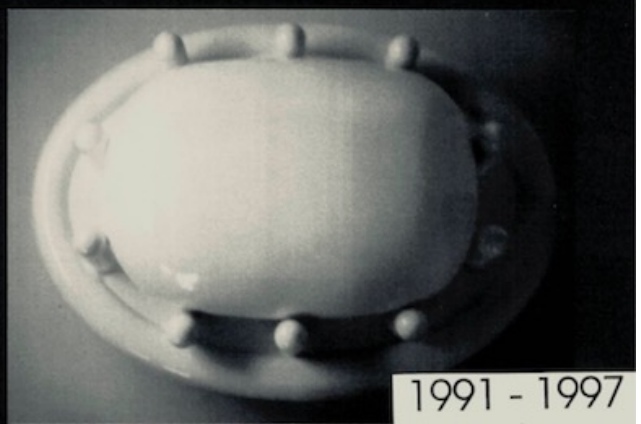




Junichiro Iwase



CULPTURE

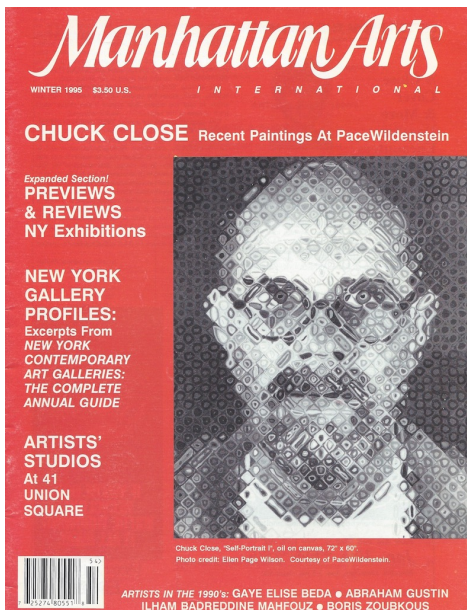


1991 - 1997



Early Sculpture 1991-1997

Brancusi-like streamlining and economy of statement are the hallmark of sculptures created by Japanese-Canadian artist **Junichiro Iwase** who honed his skills in Europe and the United States as well. Paintings by Iwase have components of mystery and intrigue while at the same time stating powerful social messages using strong color and symbolism.



**Junichiro Iwase, "The Sick Man", ABS Plastic, 40" x 30".**

Begins to exhibit sculptures in New York, 1995

Published in *Manhattan Arts International Magazine*, 1995